

Oxylus LR 8.5 / 10.5

Assembly instructions

Recommended set up (8.5" version):

- Stack : RushFPV Blade F722 / 60A 128kHz
- Motors : T-motor F100 1100kv
- Props : T-motor Cine 8.5
- GPS : GEPRC GEP-M10-DQ
- VTX : DJI O3
- Pigtail : TBS oblivion SMA / U.FL
- Antennas : FlyFishrc Osprey LHCP 5.8Ghz
- Rx :
 - o TBS crossfire nano or Diversity Rx
 - o ELRS nano or Diversity Rx
- Lipo : 6S from 3300 to 4500 mAh
- Buzzer : vifly finder 2

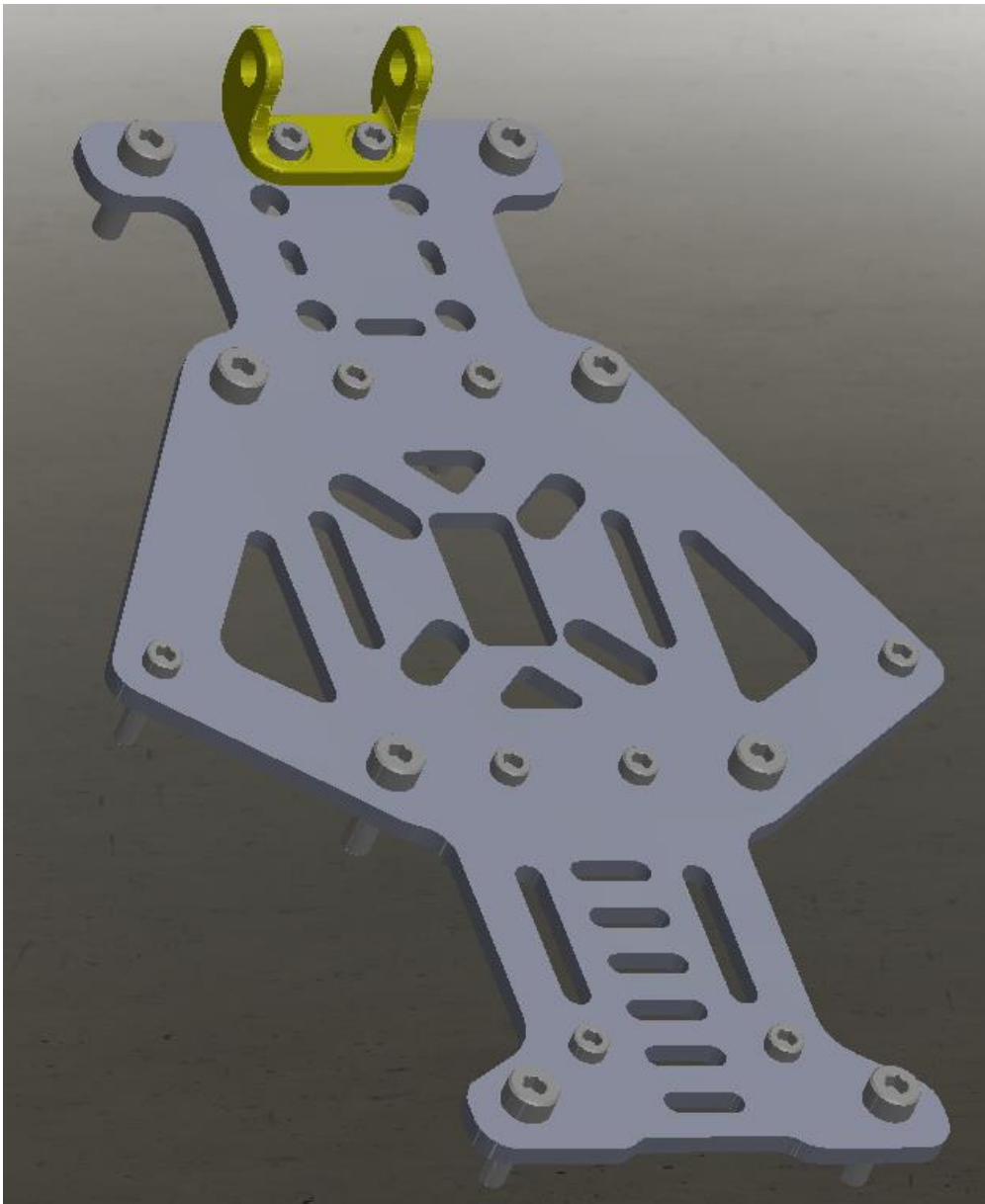


Due to different configurations, screws length passing through bottom plate, arms and middle plate may vary. Refer to the following table :

Prop size	Arm thickness	Screw color indicator
Oxylus 8.5''	6 mm	Red
Oxylus 8.5''	8 mm	Purple
Oxylus 10.5''	8 mm	Green
Oxylus 10.5''	10 mm	Blue



Step 1 :



- Bottom plate
- RX antenna mount
- 8x M4*12 / XX / XX / XX screws
- 4x M3*12 / XX / XX / XX screws
- 6x M3*16 / XX / XX / XX screws

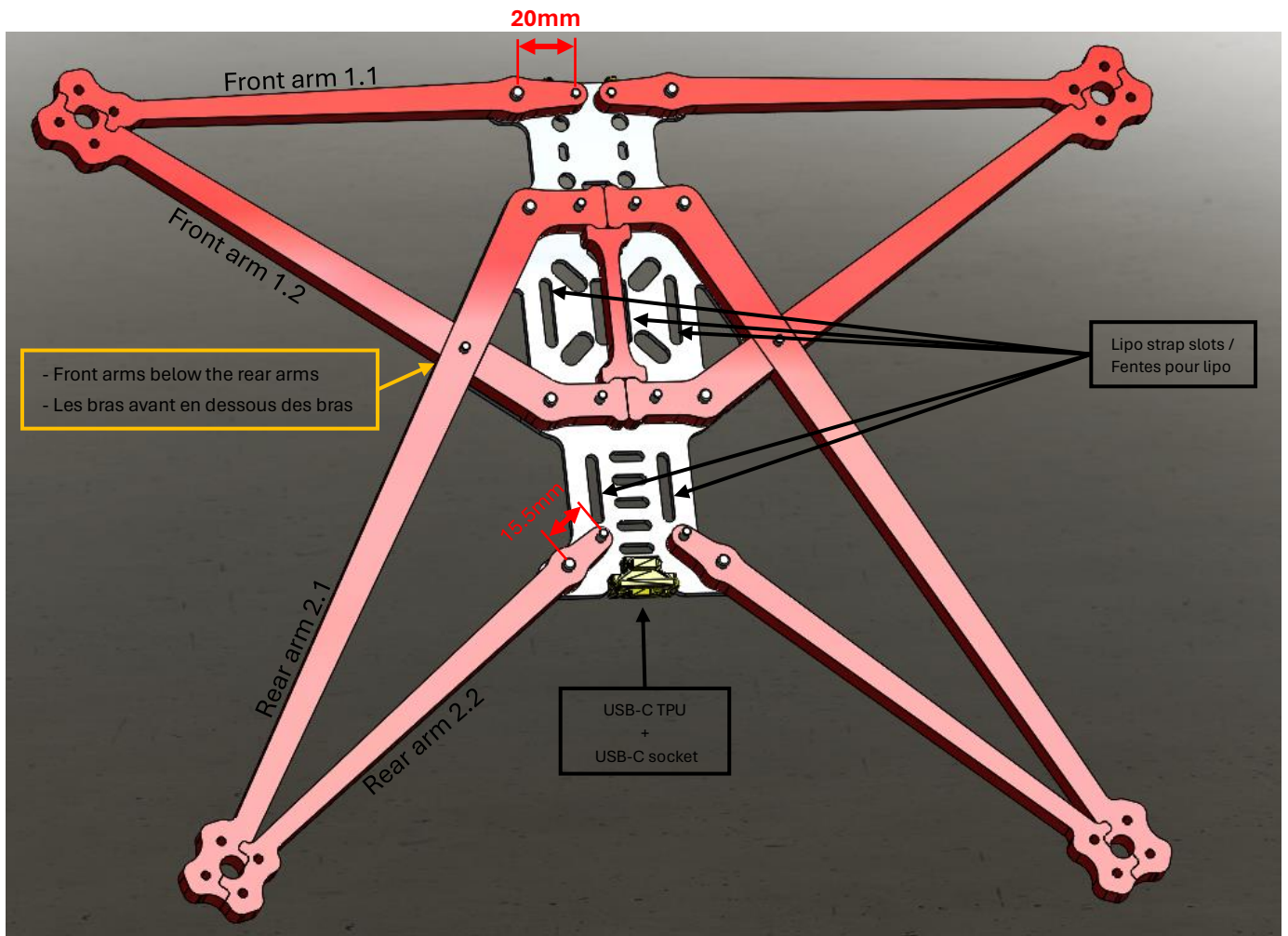


Step 2 :

- 2x front arm 1.1
- 2x front arm 1.2
- 2x rear arm 2.1
- 2x rear arm 2.2
- 1x middle reinforcement
- USB-C mount
- USB-C socket
- Lipo strap

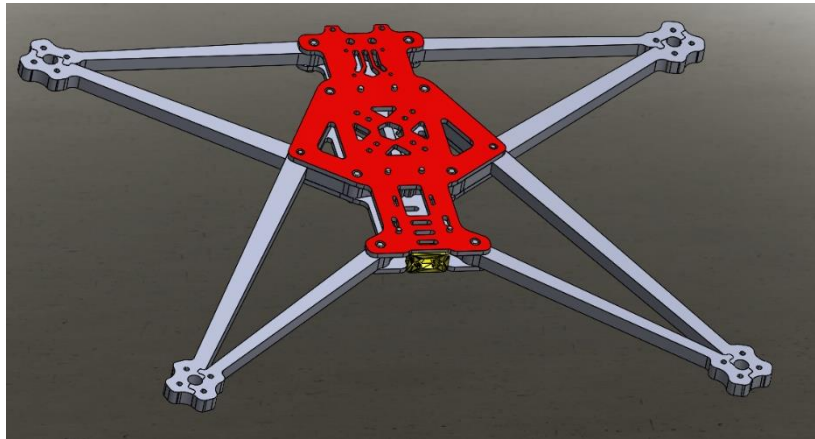
  It's better to pass now the lipo straps through the slots

  Il est préférable de passer les strap lipo à cette étape dans les fentes prévues à cet effet.



Step 3 :

- Middle plate



Step 4 :

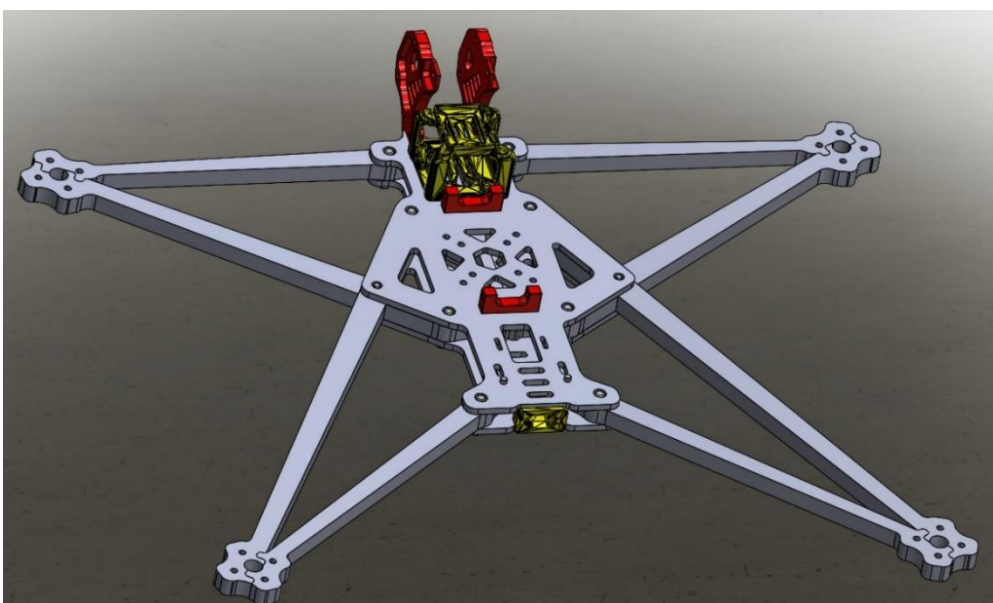
- Camera plate left
- Camera plate right
- 2x M3*6 screws
- 2x aluminum bracket
- O3 mount
- 4x M2*8 screws
- 4x M2 nuts



! Put M2 nuts into O3 TPU mount and assemble pigtails on the O3 before put it in the TPU mount. Use 4x M2x8 screws to fix the O3 mount through the middle plate



! Mettez les écrous M2 dans le support en TPU du O3 et assemblez les pigtails sur le O3 avant de le mettre dans le support TPU. Visser les 4 vis M2*8 à travers la middle plate.



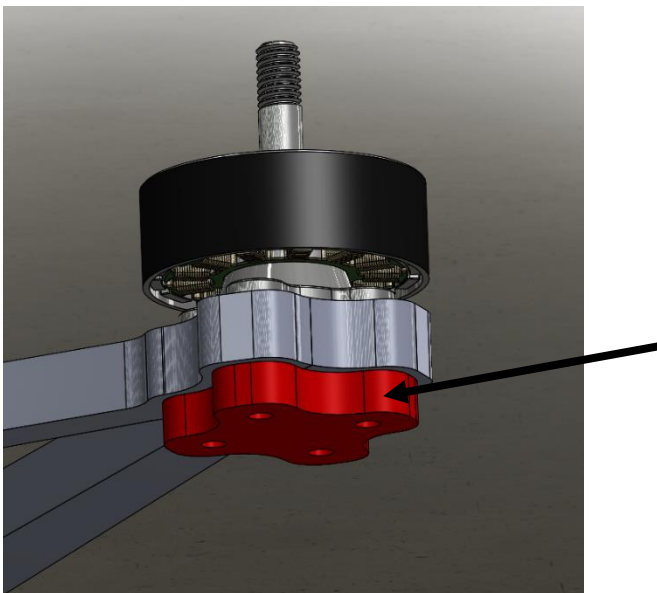
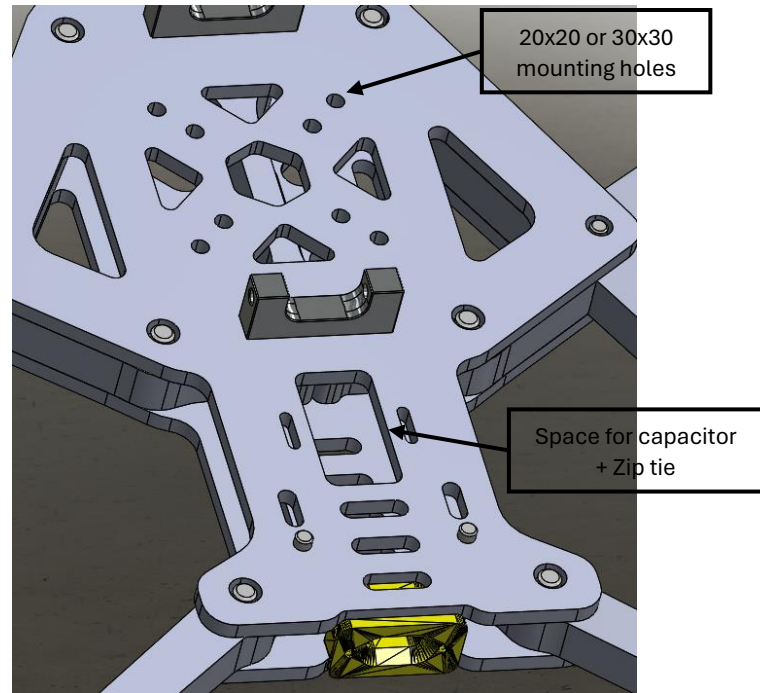
STEP 5



You can assemble and solder motors, ESC, FC, capacitor, XT90, receiver, GPS, buzzer... For the receiver and GPS cable length, receiver is placed over the O3 TPU mount, and GPS is placed above the receiver. (Go to see step 7 picture)



Vous pouvez à présent monter et souder tous les composants électronique et les moteurs. Pour estimer la longueur de câbles nécessaire, le récepteur est fixé sur le dessus du TPU du O3, et le GPS est au-dessus du récepteur. (Voir photo étape 7)



Don't forget to put don't forget to put the 4 motor reinforcements



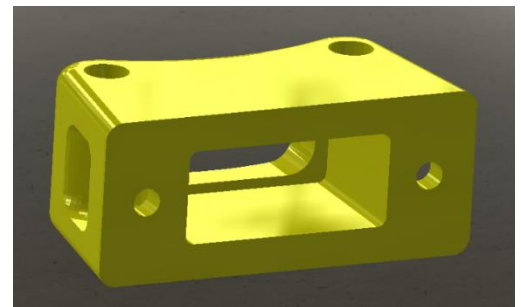
Noublier pas de Don't forget to put the 4 motor reinforcements

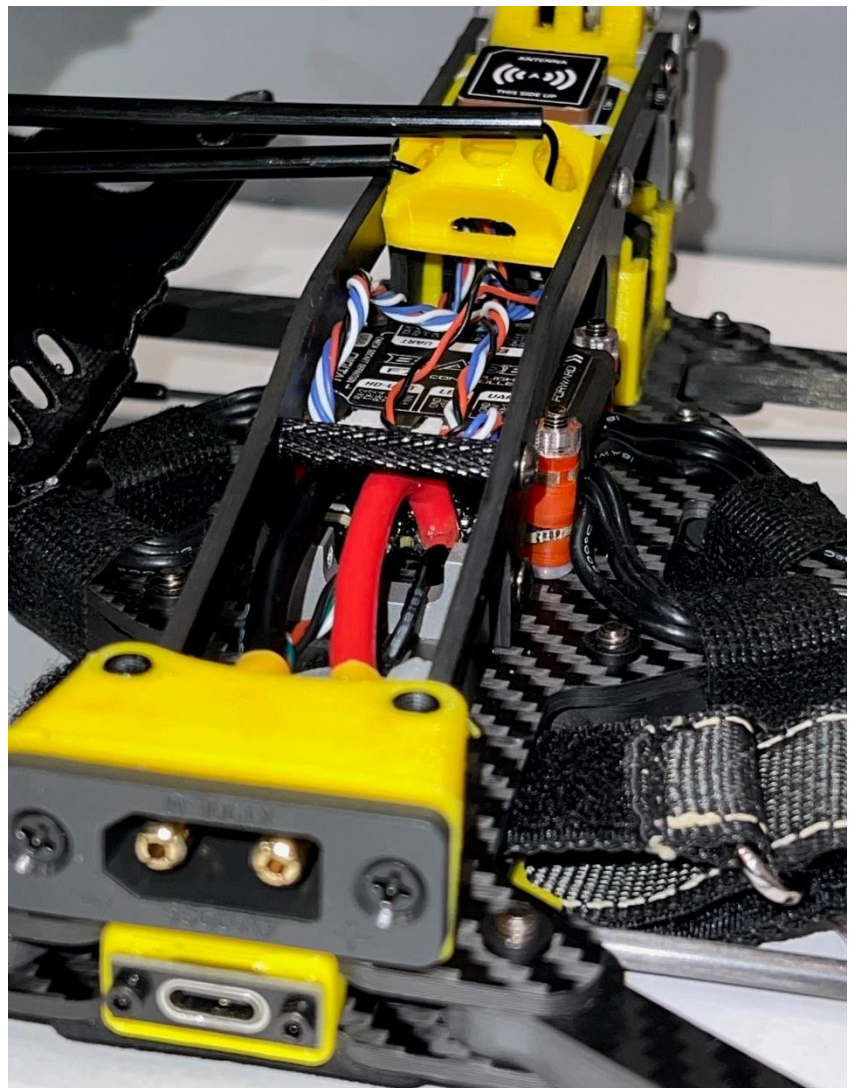
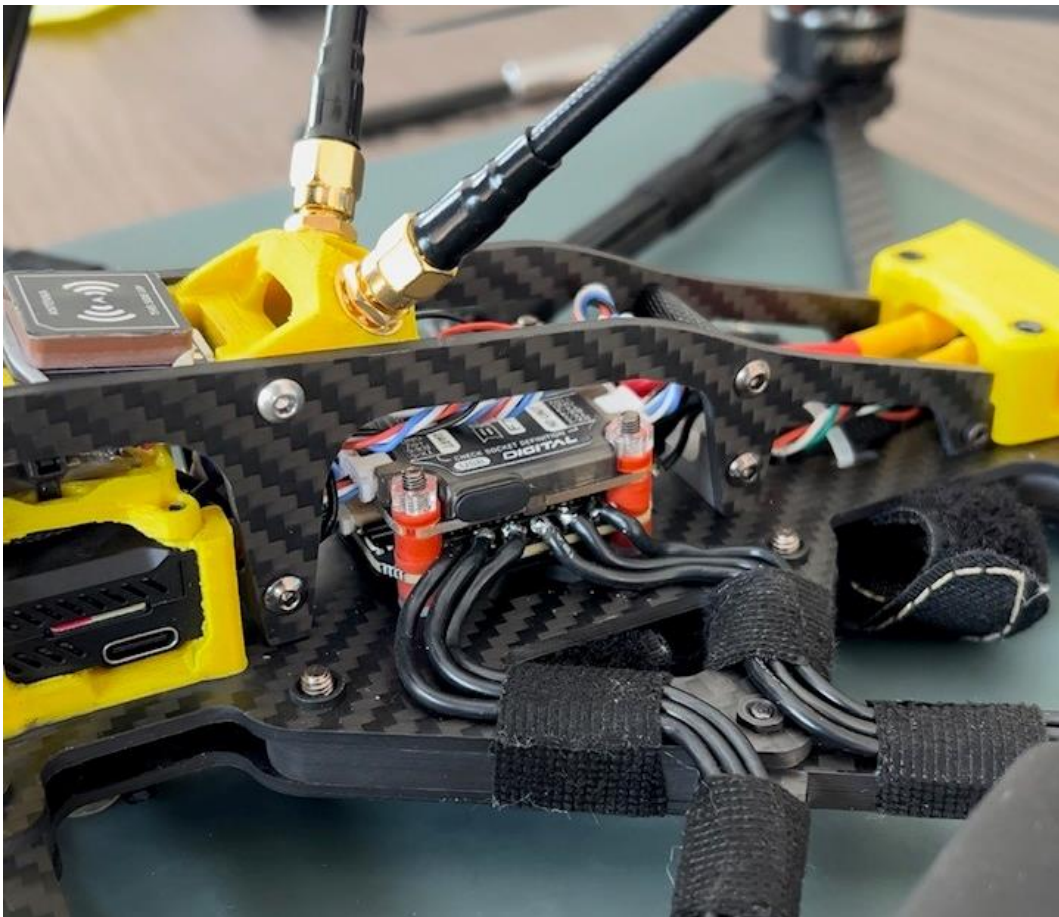


⚠ Before soldering XT90 socket to the ESCs, mount it in the XT90 TPU holder (see picture below)



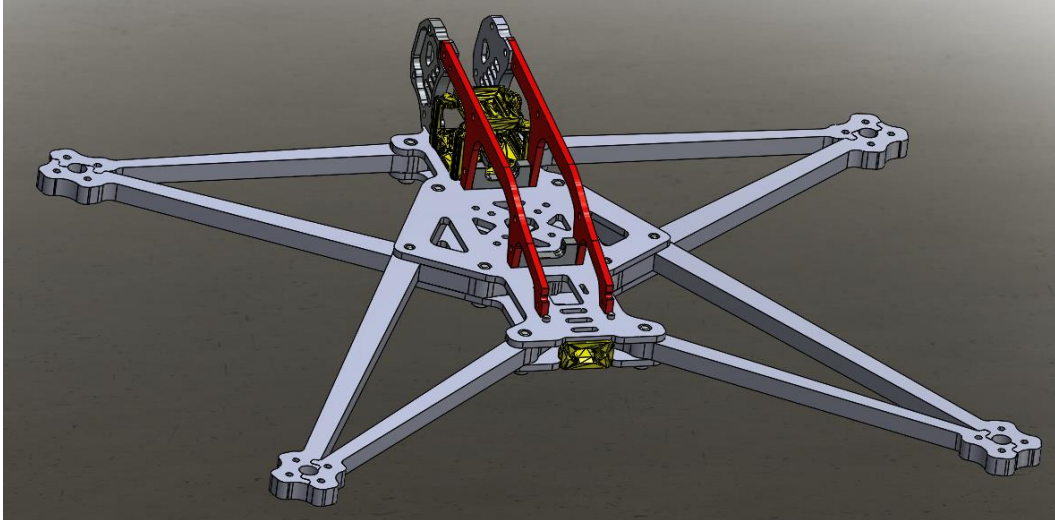
⚠ Avant de souder la prise XT90 aux ESC, montez-la dans le support TPU XT90 (voir photo ci-dessous)





Step 6 :

- 2x backbones
- 4x M3*6 screws

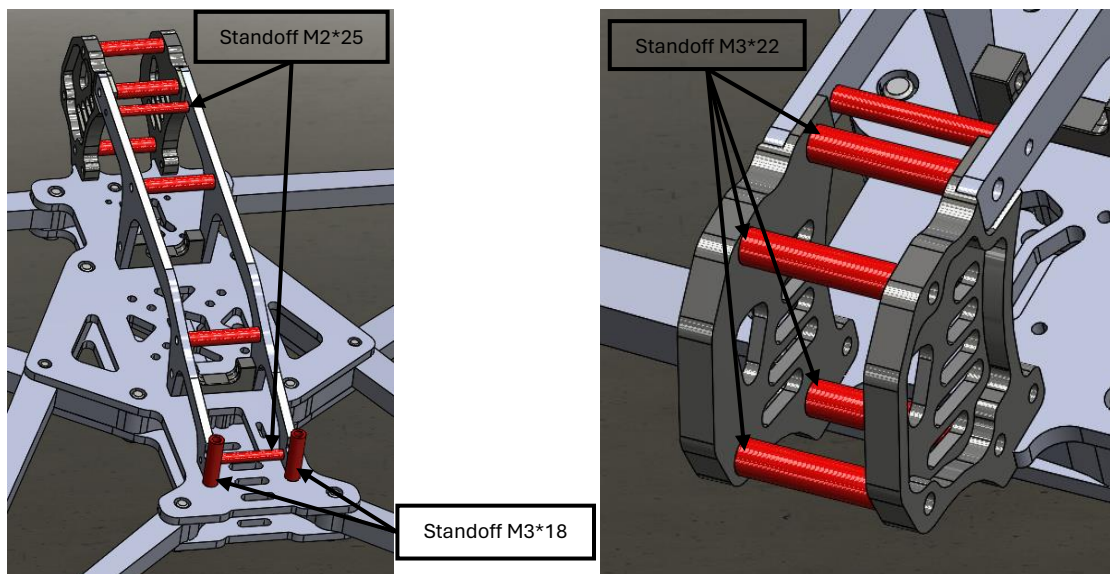


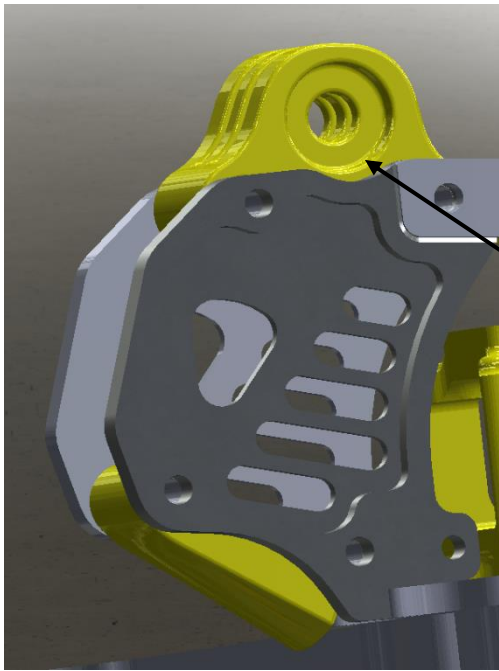
Step 7 :

- Standoff M2*25
- Standoff M3*18
- Standoff M3*22
- Standoff M3*25
- 4x M2*6 screws
- 12x M3*6 screws

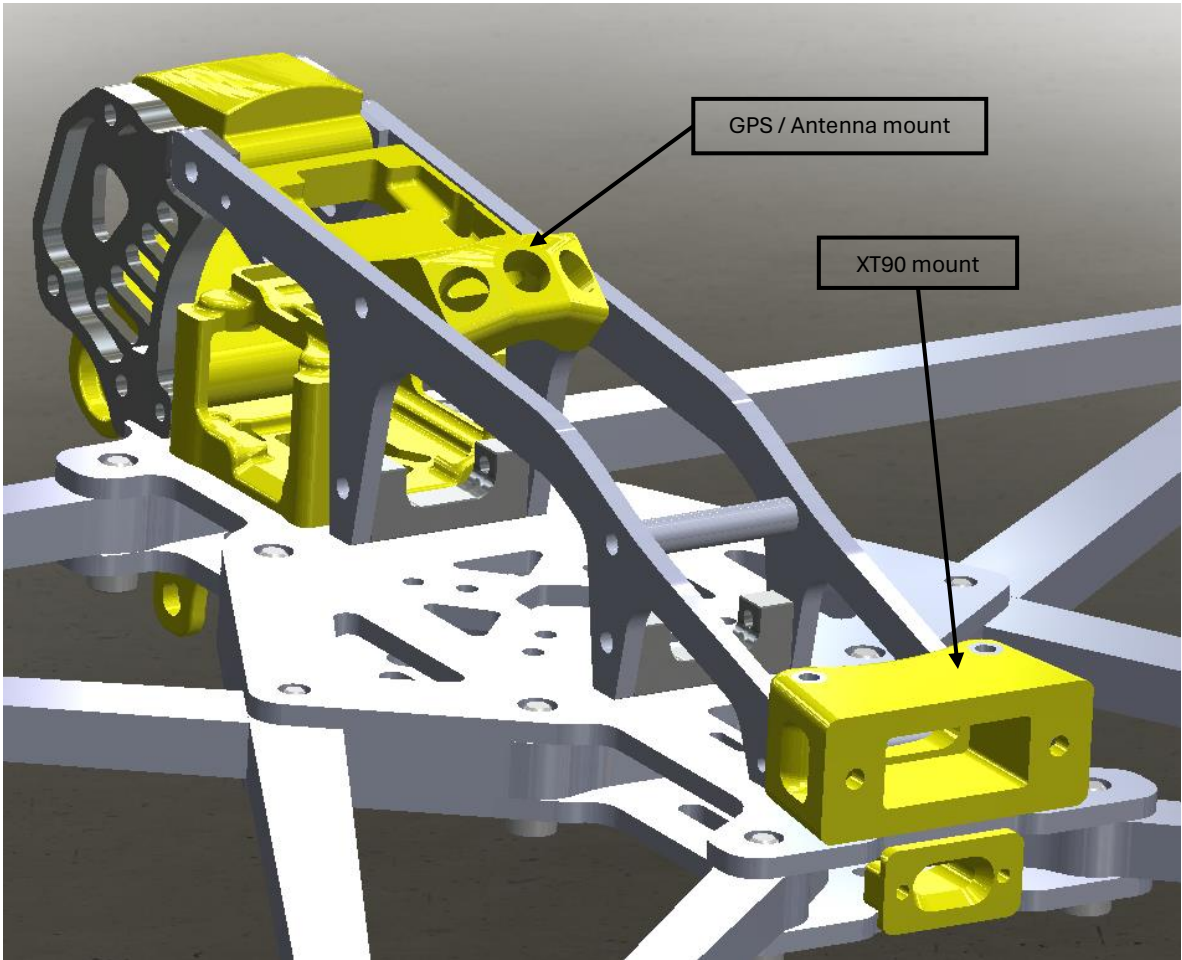
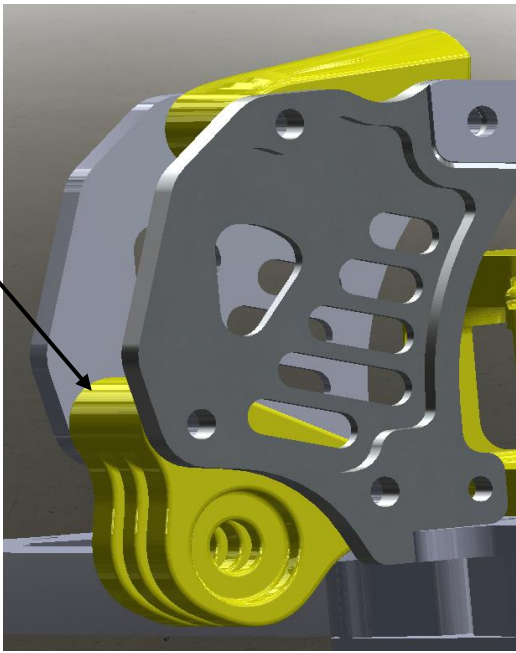
  Dont forget TPU parts (See next page)

  N'oubliez pas de monter les TPU (voir page suivante)





Normal or upside down GoPro mount



GPS / Antenna mount

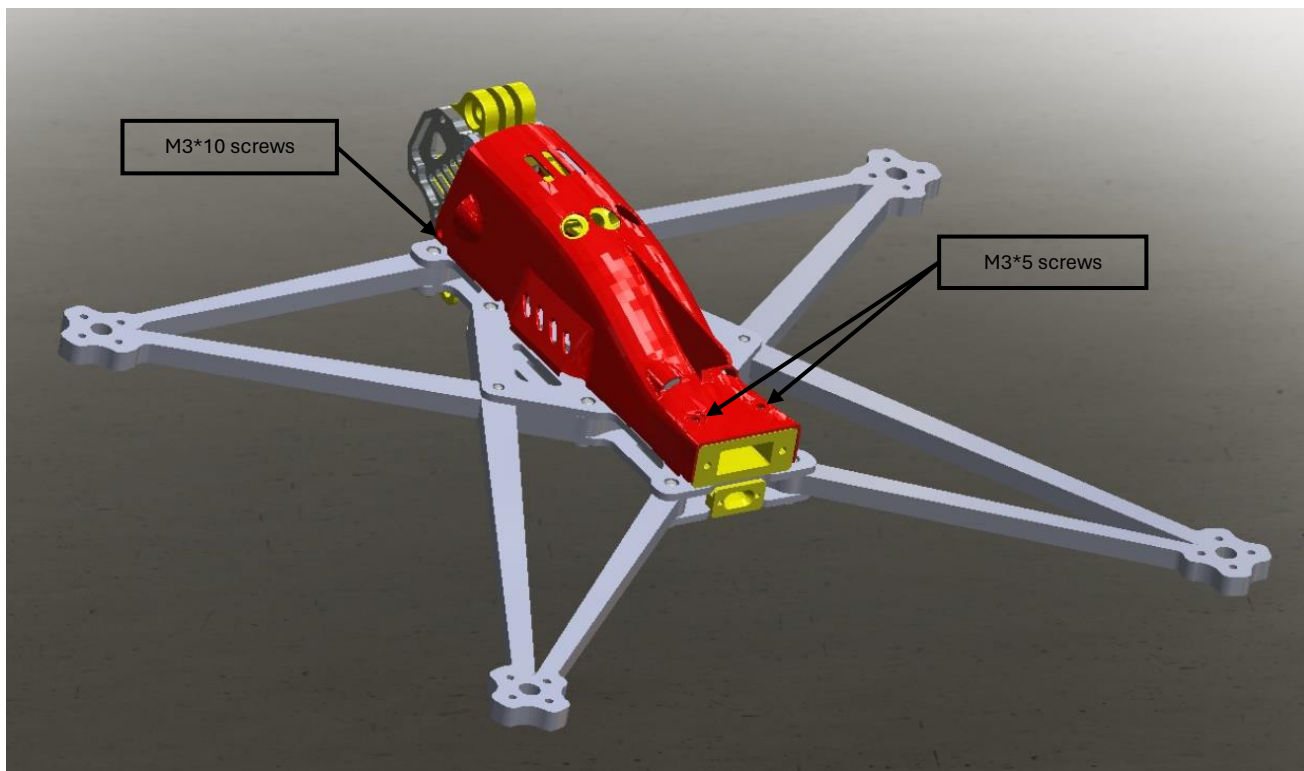
XT90 mount

Step 8 :

- 2x M3*5 screws
- 2x M3*10 screws
- Canopy

  Put the canopy, screw front screws first, then rear screws

  Mettez la canopy en place, vissez d'abord les vis avant, puis les vis arrière.



Gallery







Photos by [@mdc.42](#)



Oxylus Lr8.5

